

Kahurangi School

Suspected Abuse or Neglect Policy

Rationale

All students have the right to be safe and cared for.

Purpose

1. To protect children and maintain their welfare.
2. To ensure staff are aware of the nature and implications of abuse or neglect, take suspected abuse or neglect seriously and have a framework within which to respond when abuse is suspected.
3. To ensure that a record is kept of any concerns that students may have been neglected or abused

Guidelines

1. Staff will be provided with information to help them identify the signs of physical, sexual or emotional abuse or neglect.
2. Concerns about student welfare are to be documented whether or not abuse or neglect is suspected.
3. Staff members will take their concerns about the abuse or neglect of students to the Principal or Deputy Principal.
4. The Principal and Deputy Principal will make the decision about whether to involve external agencies: Agencies which could be involved include but may not be limited to:

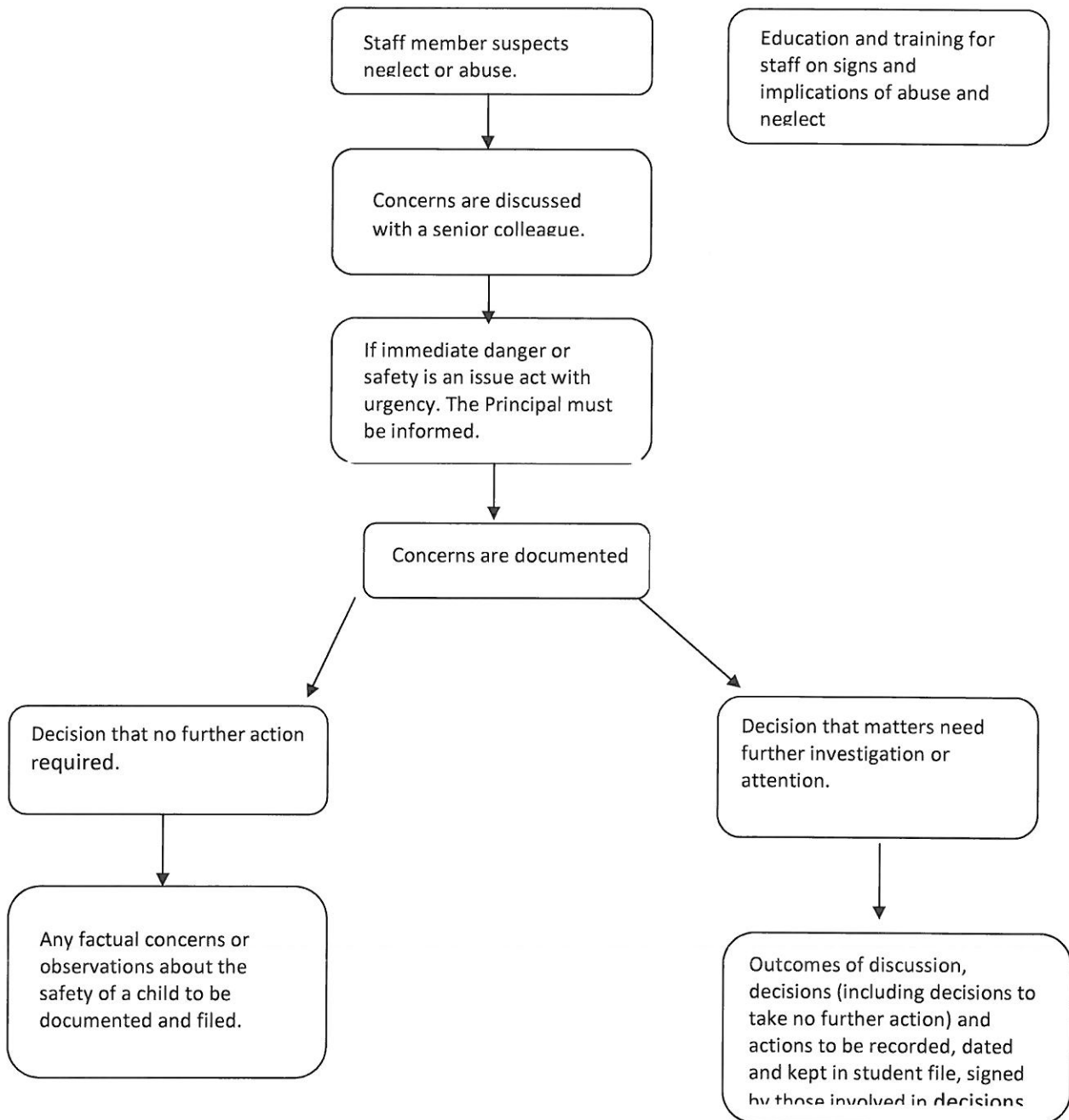
CYFS
the Police
other agencies working with the student or family
family doctors
5. All information/discussion on any suspected abuse will be recorded and kept confidential except where a decision is made that it needs to be provided to another agency or individual to ensure the safety of the student.
6. Parents/caregivers will generally be informed of the school's concerns, except where it is believed that the child's welfare is likely to be threatened.

Approved by the Board

Jan 30th 2013

Chairperson

Flowchart of action



Points to note

Avoid making judgments – simply record the facts.
Sign and date all concerns.